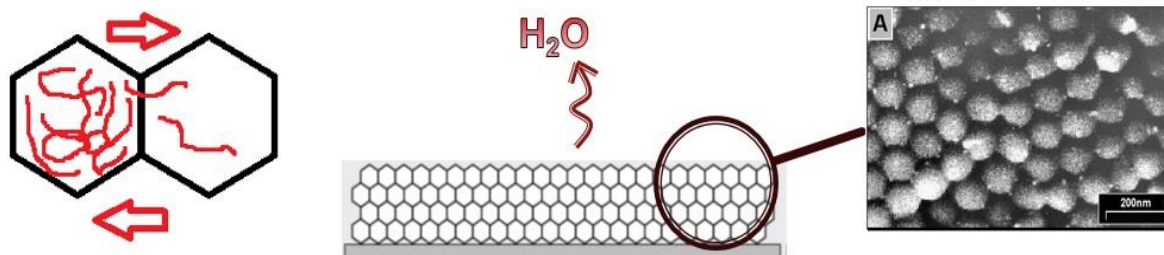


Marts 2017

## Indbydelse til foredrag om malingers ”åbentid”



In recent years there has been an increased focus on the impact of paint formulation on open time, repairable time and drying time.

In some of the discussions these terms have been used incorrectly or confusingly. It's also clear that the processes that occur in the film formation of a classic waterbased thermoplastic dispersion are not always fully understood.

This presentation will review the fundamentals of film formation, repairability and its manipulation through the following.

- What are open time, drying time & film formation? What is the difference?
- Where we need these properties and where we do not?
- What strategies are available to improve open time?
- What are the advantages and disadvantages of these strategies?
- Can we mix different technologies to achieve the target?
- What impact does open time manipulation have on other paint properties (hardness, scrub resistance, gloss, etc.)?
- How we can test open time? What is important for the professional painter?
- Last but not least: We will take a look into paint formulation details and will show best point of action.

**Speaker is Stefan Hagenberg**  
**Senior Technical Development Manager CASE from Azelis Corporate (EMEA)**

**Tirsdag den 14. marts 2017 kl. 17:00**

Hos Azelis Lundtoftegårdsvej 95, 2800 Kgs. Lyngby

**Onsdag den 15. marts 2017 kl. 17:00**

på Scandic Hotel Kolding, Kokholm 2, 6000 Kolding

Deltagelse kræver medlemskab af foreningen. Et medlem kan lejlighedsvis medtage en gæst, efter forudgående aftale med DLFF.  
Sjælland deltagere i spisning vil blive opkrævet kr. 100,- (gæster kr. 200,-), i forbindelse med middagen.  
Kolding deltagere i spisning vil blive opkrævet kr. 250,- (gæster kr. 350,-), i forbindelse med middagen.

Skriftlig, bindende tilmelding skal være foreningen i hænde:  
**Senest fredag den 10. marts 2017**

Tilmelding sendes til: [info@dlff.dk](mailto:info@dlff.dk), eller pr. brev eller telefon/SMS på 3133 1575.  
Ved ønske om samlet firma faktura giv besked pr. E-mail: [info@dlff.dk](mailto:info@dlff.dk)